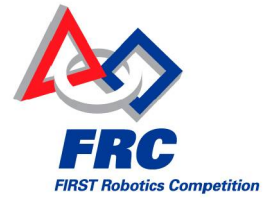


Shown here is the surface of a new Rover Wheel from the 2009 FRC kit of parts. Notice that its finish is unmarred, shiny and slick:



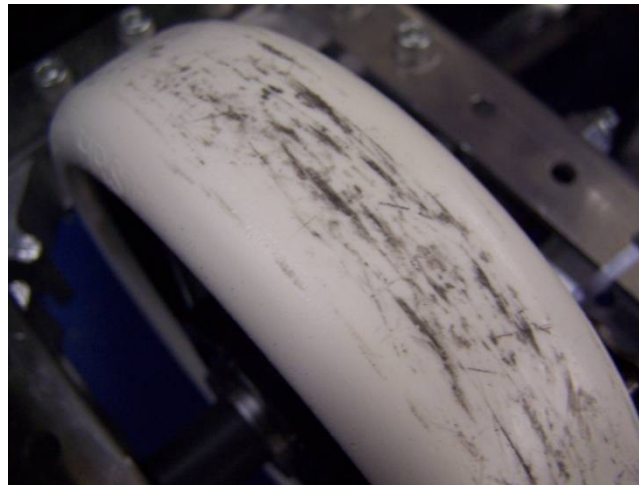
In contrast, here is a wheel that has been intentionally (illegally) modified to alter its traction:



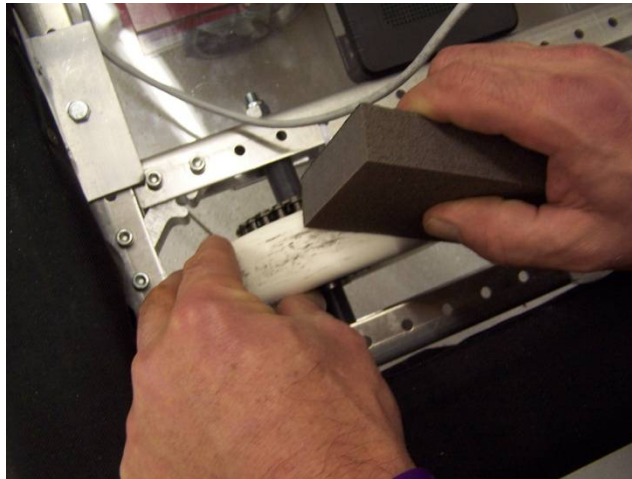
One good and quick way to determine the extent to which a wheel has been roughened is to use a fingernail (the "Thumbnail Test") as shown. If your nail catches on ridges or burrs, it's too rough:



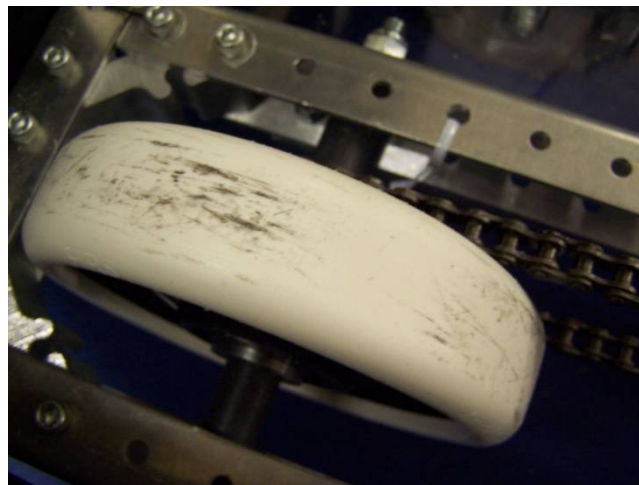
Here is a wheel that has experienced a normal amount of wear and tear, with minimal scarring and a layer of grime:



This can be cleaned with a Scotch-Brite pad or fine sandpaper block as shown:



If not used to excess (as in producing a pile of white dust on the floor!), the results should be good, as shown in this partial job:



Once cleaned, perform the “thumbnail test” once more to ensure there are no major ridges, burrs or other surface imperfections that can change the traction.